



Lower Gas Cooler block replacement process

SandenVendo January 2022

This document presents the main steps for replacing the lower Gas Cooler block of a Sanden Condensing unit CDU-L or CDU-M

References :

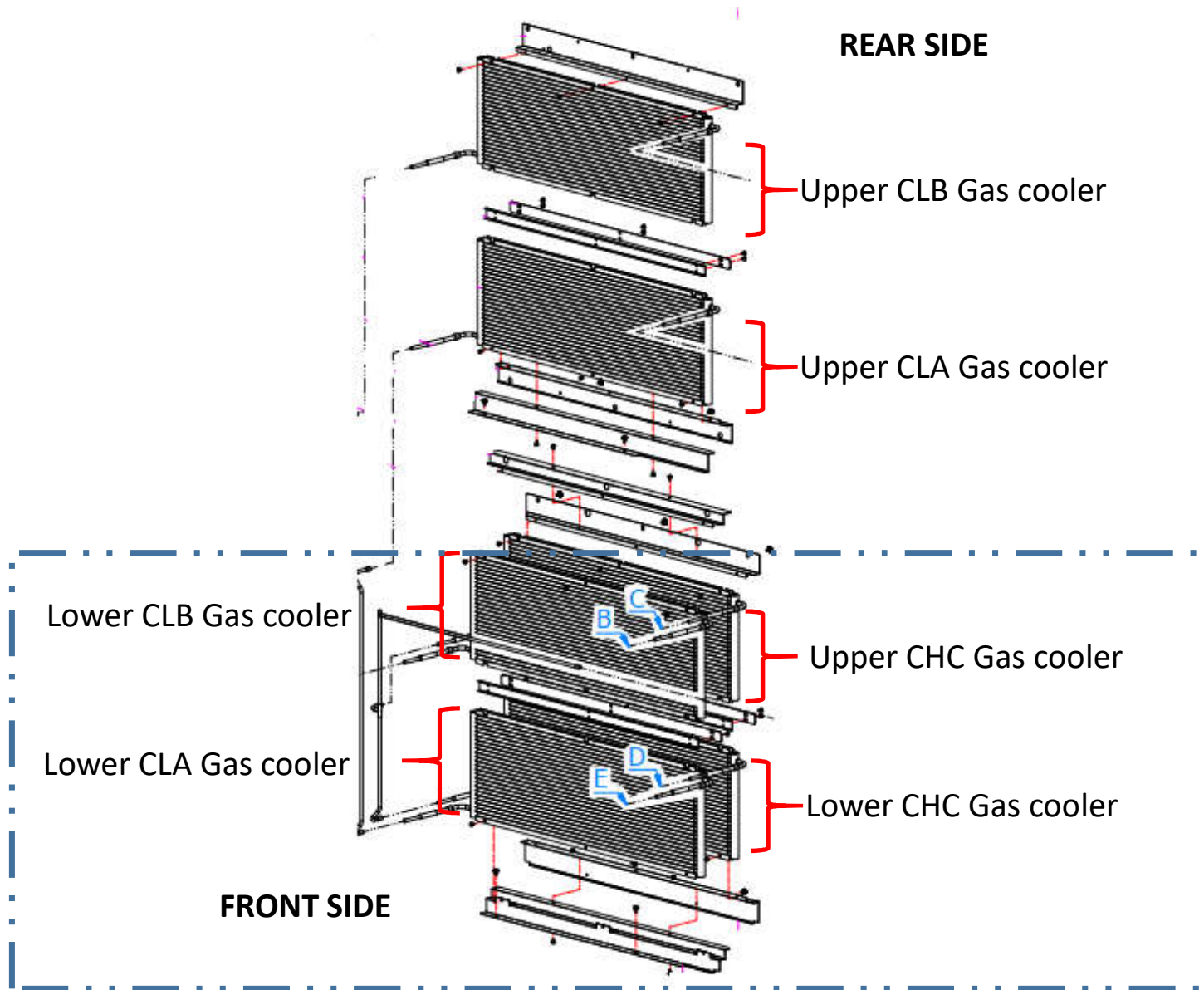
Type	Model
CDU-L	R06A2A R06A2B R06A2C
CDU-M	R04A1A R04A1B R04A1C R04A1D

100% CO2 Condensing units

ECO-FRIENDLY REVOLUTION

This document is the property of SandenVendo Gmbh.
The illustrations in this document are given for information only.
SandenVendo Gmbh reserves the right to modify information in
this document without notice.



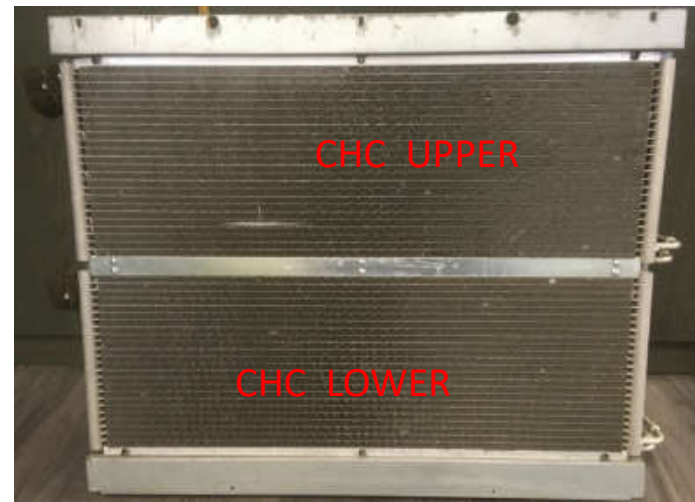


Lower Gas Cooler block (CLA /CLB & CHC) replacement process

As the various Gas Coolers located at the bottom of the product cannot be individually dismantled on the product, it is necessary to remove and replace the complete block comprising the lower part of the Gas Cooler loop A, the lower part of the Gas Cooler loop B and the Gas Cooler assembly of loop C.



LOWER BLOCK GAS COOLER FRONT SIDE



LOWER BLOCK GAS COOLER REAR SIDE

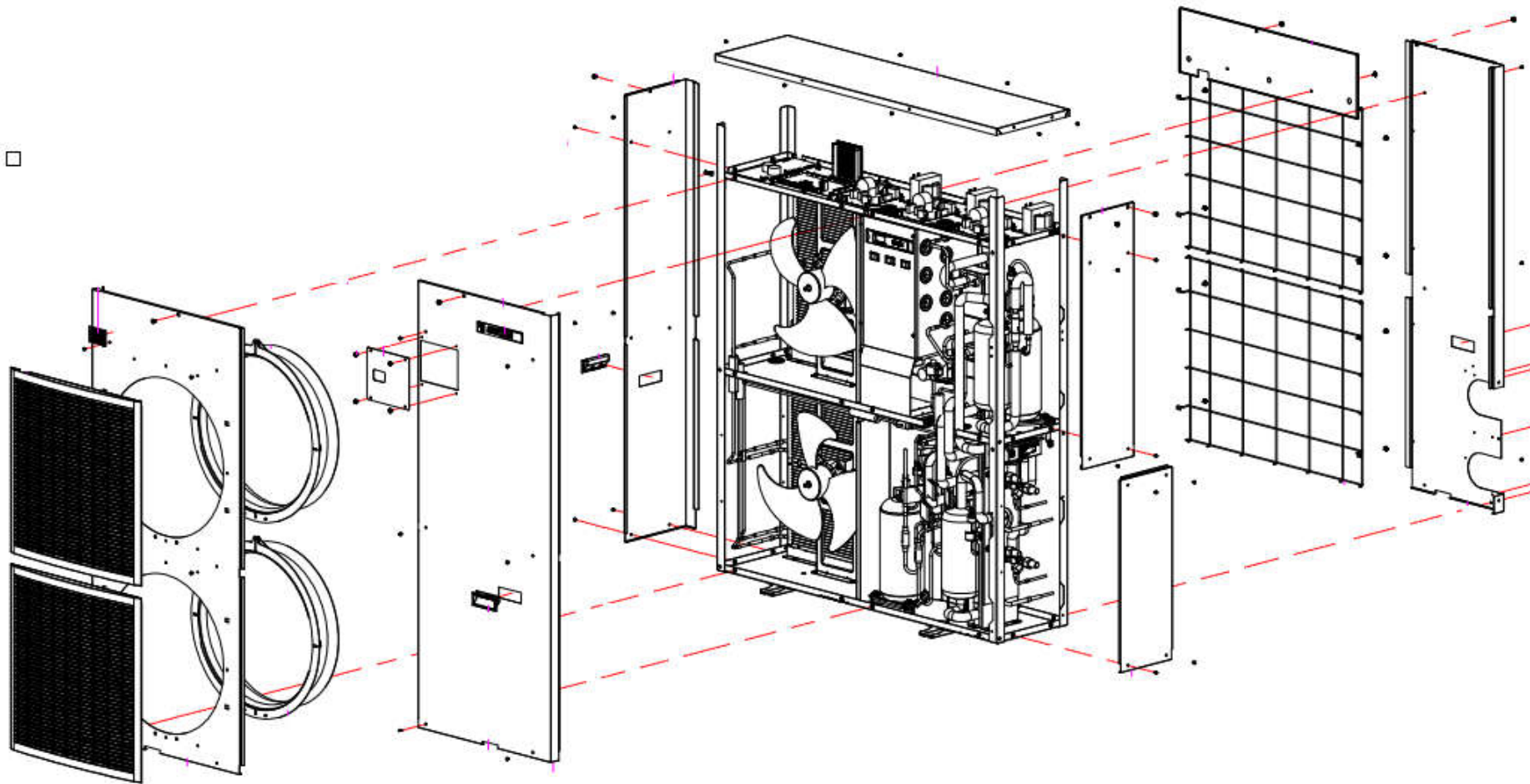


Lower Gas Cooler block (CLA /CLB & CHC) replacement process

1. Turn power off the condensing unit.
2. Remove the CDU casing (left side + right side + front right and left + rear panel , and top panel)
3. Remove the Gas cooler protection grid (8 bolts)
4. Disconnect and Remove the Lower Fan motor. (4 bolts)
5. Separate the Gas Cooler block from the CDU bracket by removing the fixing screws
6. Empty the refrigerant R744:
 - Loops A and B: first by the suction valves, then by the supply valves.
 - Loop C: gently cut the sealed charge tube on the LP side
7. Ensure that there is no remaining pressure on the loop.
8. Debraze and remove the failed Gas cooler block.
9. Prepare the new Gas Cooler block.
10. Brazing with nitrogen flux.
11. Leakage test at 80 bar , check brazing (see guide for piping work and start-up)
12. Reassembled and reconnect the Lower Fan motor
13. Turn on the condensation unit and check that there is no error code.
14. Vacuum of the dedicated loop for 3 hours
15. Reassembled all the fixing bracket.
16. Load R744:
 - Loops A and B: initial loads determined at commissioning
 - Loop C : 380 gr R744 for the B type CDU & 420gr R744 for C and D type CDU
17. Restart the entire installation, make sure it is working properly.
18. Close the panels

Lower Gas Cooler block (CLA /CLB & CHC) replacement process

2.Remove the CDU casing (left side + right side + front right and left + rear panel , and top panel)



Lower Gas Cooler block (CLA /CLB & CHC) replacement process

4. Disconnect & Remove the Lower Fan Motor



Lower Gas Cooler block (CLA /CLB & CHC) replacement process

5. Separate the Gas Cooler block from the CDU bracket by removing the fixing screws



REAR SIDE



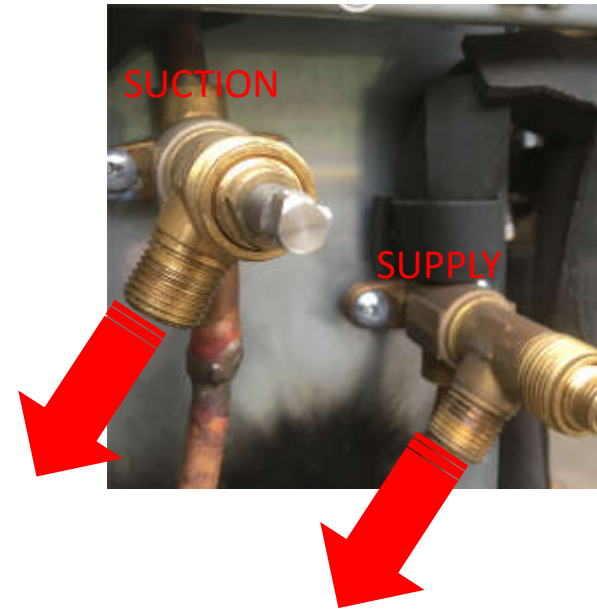
FRONT SIDE

Lower Gas Cooler block (CLA /CLB & CHC) replacement process

6. Empty the refrigerant R744:



Loop C: gently cut the sealed charge tube on the LP side



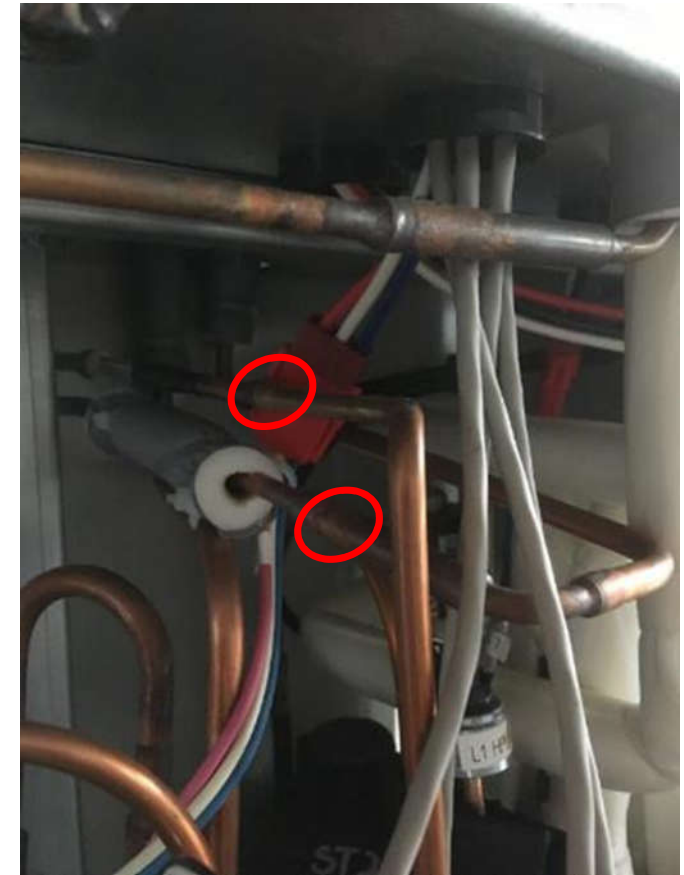
Loops A and B: first by the suction valves, then by the supply valves.

Lower Gas Cooler block (CLA /CLB & CHC) replacement process

8. Debraze the failed Gas cooler block.



FAN SIDE



COMPRESSOR SIDE

Lower Gas Cooler block (CLA /CLB & CHC) replacement process

8. Remove the failed Gas cooler block.

